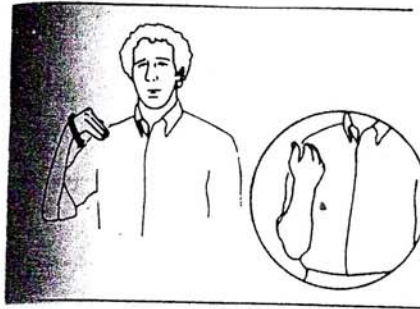


TROUBLE (trūb' əl), *n., v., -BLED, -BLING.* (A clouding over; a troubling.) Both "B" hands, palms facing each other, are rotated alternately before the forehead. *Cf.* CONCERN, FRET, PROBLEM 1, WORRIED, WORRY 1.



fault¹

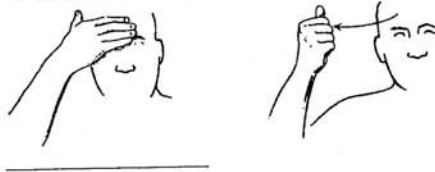


WRONG 1 (rōng, rōng), *adj., n.* (Ration; obscure; the thumb and little finger are said to represent, respectively, right and wrong, with 1 head poised between the two.) The right "Y" has palm facing the body, is brought up to the chest. *Cf.* ERROR, MISTAKE.



Forget

FORGET 1 (fər gēt'), *v., -GOT, -GOTTEN, -GETTING.* (Wiping knowledge from the mind.) The right hand, fingers pointing left, rests on the forehead. It moves off to the right, assuming the "A" position, thumb up and palm facing the signer's rear.



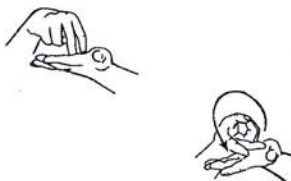
2. Place a Flat O hand on your cheek, bring your hand down while changing to an S hand, and tap it on top of your other S hand twice.



Hungry

A right claw hand, palm facing chest, pulls down the chest several times.

FALL 2, *n., v., FELL, FALLEN, FALLING.* (Falling on one's side.) The downturned index and middle fingers of the right "V" hand are placed in a standing position on the upturned left palm. The right "V" hand flips over, coming to rest palm up on the upturned left palm.



EXCUSE (*n.* ĭk skūs'; *v.* ĭk skūz'), *-CUSED, -CUSING.* (A wiped-off and cleaned slate.) The right hand wipes off the left palm several times. *Cf.* APOLOGIZE 2, APOLOGY 2, FORGIVE, PARDON, PAROLE.



BELCH (belch), *n., v.* (Releasing a belch.) The right "S" hand is placed at the chest. The right index finger suddenly pops up, and the signer mimes releasing a belch.



SORRY (sōr' ĭ, sōr' ĭ), *adj.* (The heart is circled, to indicate feeling, modified by the letter "S," for SORRY.) The right "S" hand, palm facing the body, is rotated several times over the area of the heart. *Cf.* APOLOGIZE 1, APOLOGY 1, CONTRITION, PENITENT, REGRET, REGRETFUL, REPENT, REPENTANT, RUE, SORROWFUL 2, SORRY.

